



MBBC

More Bicycling = Better Community!

Mount Baker Bicycle Club Newsletter, Volume 24 No 1, February 2015

in this newsletter:

Happy New Year 1
 Membership renewals due. 1
 Presidents Day Ride..... 1
 Weekly Rides 2
 February highlights 2-3
 Events in 2015 4
 Rides in 2015 5
 Club Administration 6
 Membership form 6
 Welcome new members .. 7
 Volunteering this year 7
 February Calendar 8

This month's contributors:


Mary Anderson, Cathy Crouch, Scott Dorrough, Casey McGee, Tim Ryan, Melanie Swanson
 Thanks All!



the club online:


www.mtbakerbikeclub.org
www.chuckanutcentury.org

and our social sites:

 [facebook.com/mountbakerbicycleclub](https://www.facebook.com/mountbakerbicycleclub)

 sports.groups.yahoo.com/group/MtBakerBicycleClub

 twitter.com/mtbakerbike

 [flickr.com/mtbakerbikeclub/](https://www.flickr.com/photos/mtbakerbikeclub/)



Cheers! MBBC VP Scott and President Hilary on the cold and clear New Year's Day ride - photo by Cathy Crouch

HAPPY NEW YEAR!

The MBBC wishes you a wonderful 2015 full of safe cycling!

2015 MBBC Membership

It's time to renew for 2015. All MBBC memberships are per full calendar year, so everyone's renewals are due each January. Many have renewed already (thank you!) - for

those who still need to renew, please do so by filling out the form on page 6 and mailing it in with a check.

You'll receive your brand new 2015 membership card, designed by our graphic artist Tim Ryan. We are in the process of updating our membership benefits webpage with new local discounts too!

PRESIDENT'S DAY RIDE: FEBRUARY 16, 2015

The annual MBBC President's Day ride starts at Cornwall Park at 10am. We will meet in the parking lot near the Meridian entrance at 10am, with the ride leaving at 10:15am. If it's a nice day we will ride to Lynden and back. If the weather is not so nice, we will do a round trip to Ferndale. Mileage will be 25 or 50 miles, depending on the route. Pace will be moderate to brisk, and snow, ice, or a torrential downpour will cancel.

We will plan on a turnaround-point lunch stop at Dickey's (either in Ferndale at 2054 Main Street or the Lynden location at 8082 Guide Meridian) so bring along some money for some great barbecue. dickeys.com

Questions: ride leader Scott Dorrough: pedalfight@gmail.com

WEEKLY AND GROUP RIDES the “put your mitts on, it’s *still* winter” edition

Sunday Edison Social Ride starts from Edison Elementary School parking lot. 30-40 miles, 10-14 mph, route varies. 10 am start time. For additional info: Alfred Arkley arkley@comcast.net or 360-527-8638

Sunday Rabbit Ride: 32mi road ride, South on Chuckanut, back via Colony and Lake Samish. All welcome; come prepared to push yourself. Pace varies by individual. Small similarly-paced groups leave from Fairhaven Bike. Those who estimate a 2-or-more-hour ride time leave at 8am. Faster groups leave every 5 minutes thereafter. Info: John Hauter, johnh@fairhavenbike.com 733-4433.



Tuesday Ferndale Social Ride: starts from Pioneer Park in Ferndale, 30-40 miles, 13-16 mph route varies. Start time either 9am or 10am. To check time and other info: Bob Parker rmp-4724@hotmail.com or 360-671-6910

Wednesday Group Workout Ride: Winter ride is a fast trail ride with lights. 20 mile distance, meet at 5:45 pm, leave by 6pm from Boundary Bay Brewery at Railroad Avenue. Trail-capable bikes. Gather at brewery afterward (7:30p). - In Spring/Summer this ride is a fast road ride. We will be on the trails until sometime in March 2015 then will switch back to road. Contact: Tim Ryan, t.ryan.2009@gmail.com.

Thursday South Social Ride starts from Edison Elementary School parking lot. 30-40 miles, 10-14 mph, route varies. 10 am start time. Info: Alfred Arkley: arkley@comcast.net or 360-527-8638



TNR (Thursday Night Ride) Thursday nights until mid-March. Casey, John and the crew at Fairhaven Bike will be riding mountain bikes. Leave at 5:15pm from Fairhaven Bike, 13.8 mile mountain bike ride (cyclocross bikes fine). The route follows the Interurban trail up to fun Padden lake trails and back. Approx 1,300 feet of climbing. 14-18 mph pace, Lights required. caseym@fairhavenbike.com

Saturday Donut Ride: 24 – 45 miles, race pace, departs from Kulshan Cycles, beginning March 1st will be back to the 7am start time. Goes to Ferndale and return, or if you wish continue to Birch Bay and return. Every week of the year!!

Saturday Recumbent Ride: Second Saturday of the month at 10 am. 14 mile intown course begins at Kulshan Cycles. Weather-dependent. Robert Parker at rmp-4724@hotmail.com or 360-671-6910

Seattle Bike Show 2/28–3/1; Vancouver Bike Show 3/7–8

MBBC, NW TANDEM RALLY, AND BELLINGHAM TOURISM TO SHARE A BOOTH AT 2 BIKE SHOWS COMING UP

The formerly-known-as Seattle International Bike Expo is now the Seattle Bike Show, and will be held at the Century Link Field Events Center on the weekend of February 28-March 1. The show is now being presented by Cascadia Events, and will share the building with two other recreational shows the same weekend: The *Seattle Golf Show* and the *Travel Trips and Adventure Expo*. Bellingham Whatcom Tourism has reserved a booth at the show, which will be used to promote Bellingham cycling events, including the 2015 NW Tandem Rally, the Chuckanut Century, and other MBBC rides. It will be interesting to have so many different recreational vendors sharing the same room at the same show.

Similarly, the following weekend (March 7-8), Bellingham Whatcom Tourism will also provide a bicycling booth for the MBBC at the Vancouver Bike Show. The Bike Show will be sharing the Vancouver Convention Center with the *Outdoor Adventure and Travel Show*. Another big multi-sport show, and we'll be part of it!

We will need volunteers to staff our booth on both of these weekends. Both Doug (representing the Chuckanut Century) and Jennifer (representing the Tandem Rally) will be on hand for the entire weekend, and will need a few people to work two-hour shifts. chuckanutcentury@mtbakerbikeclub.org or director2015@nwtr.org to sign up for a time.

seattlebikeshow.com

vancouverbikeshow.com



WMBC TRAIL BUILD DAY - FEBRUARY 21ST, SATURDAY 9:00 AM



VOLUNTEERS NEEDED!!!

Do you ride your mountain bike on the vast maze of trails surrounding Bellingham? Maybe you trail run or hike on the same trails. Do you ever wonder how so many beautiful trails exist in this area? A dedicated group of maintenance workers is absolutely necessary for such a system to thrive as it has. The WMBC (Whatcom Mountain Bike Coalition) fka WhIMPs has been doing a fantastic job over the years keeping our trail system the envy of cities across the country.

Our Mount Baker Bicycle Club will be sponsoring a Trail Build Day with WMBC on February 21st, Saturday at 9:00 am. We will be working on trails in the Galbraith Mountain network. We will meet at the parking lot off Samish Way across the street from Galbraith Lane. We will carpool to the work site (or you can ride your bike) from there. Bring weather appropriate clothes and work gloves. We will work rain or shine (unless the weather is *really* terrible). The MBBC will supply coffee and pastries in the morning and lunch around 12'ish. Come on out and help do some maintenance on the trails that we love so much.

Questions? email Tim at t.ryan.2009@gmail.com or check out the WMBC website: wmbcmtb.org/trail-days/

Volunteers are required to sign a waiver; you can view it on the wmbcmtb.org/trail-days webpage.



Sterling Bike Works fundraiser

LOVE YOUR RIDE - A CELEBRATION OF WINTER CYCLING

Bellingham's Aslan Brewery is the host of the 4th annual Love Your Ride event, a fundraiser for Sterling Bike Works. Come on over to Aslan on February 12th at 8:30 pm.

Celebrate bikes, both the riding of them and the concept. Try your hand at some bike trivia, bid on an item or three in the silent auction, drink a beer, eat some tacos, and raise money for Sterling Bike Works and its programs.

Enjoy a bicycle valet, complimentary tire pumping and chain lubing, live music, and good company.

Aslan is donating a percentage of its drinks profits to SBW, and there will be prizes for first, second, and third place trivia winners.

Sterling Bike Works provides bicycle maintenance and education for youth in the Bellingham area.

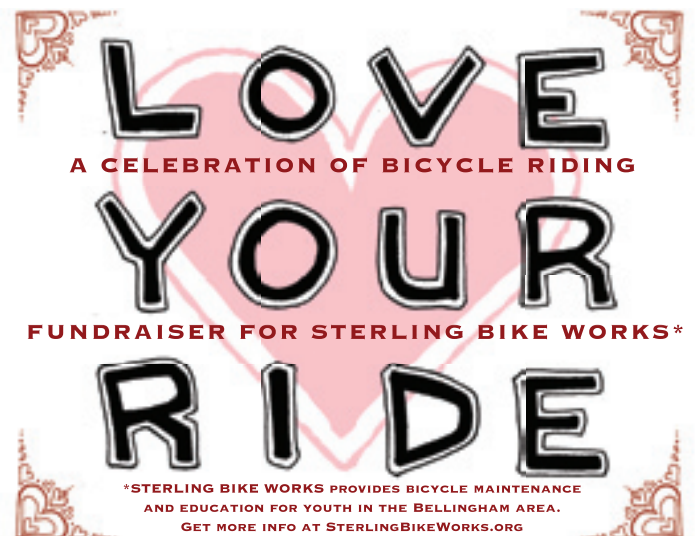
SterlingBikeWorks.org

-- submitted by Melanie Swanson

everybody  BIKE



THURS. FEB. 12TH 8:30PM



Mt Baker Bicycle Club - February 2015 3

Some of the events upcoming in 2015

Bike Month

National Bike Month - May 1-31

Procession of the Species parade - May 2 bpots.org/

Bike to Work and School Day - May 15

Adaptive Cycles Expo - TBD

watch for more Bike Month events to be announced in May.

Classes & Training

Bellingham REI Cycling maintenance classes: check the monthly calendar at rei.com/stores/bellingham.html.

Cycle Moles Indoor Training - Spring "Moles" sessions start **March 2nd** and will get you ready for Ski to Sea! Contact Fairhaven Fitness: cyclemoles.com or 360-733-5050

Races

March 28-29 US Cycling Collegiate road racing in Bellingham nwcollegiatecycling.us/15SRoad.html

May - October BMX racing, Fridays and Saturdays; practice track open Tuesday and Thursdays. bellinghambmx.com

May 24: Ski to Sea skitosea.com

June 27: Lake Padden Triathlon cob.org/services/recreation/races/padden-triathlon.aspx

June 28: Bellingham Kids' Traverse recreationnorthwest.org/bellingham-kids-traverse

TBD: 5th Annual All-Girl AlleyCat (Seattle) menstrual-monday.com

TBD (likely July 11-12): Padden Mountain Pedal facebook.com/PaddenMtnPedal

July 25: Kulshan Quest Adventure Race recreationnorthwest.org/quest-adventure-races/kulshan-quest

August 2: Bellingham Youth Triathlon - cob.org/services/recreation/races/bellingham-youth-triathlon.aspx

Sept 19: Bellingham Traverse recreationnorthwest.org/bellingham-traverse

Gatherings

Love Your Ride - A Celebration of Winter Cycling

Feb 12, (see p. 3) to benefit Sterling Bike Works. 8:30 pm Aslan Brewpub sterlingbikeworks.org/4th-annual-love-your-ride/

Recreation Northwest Expo - March 12, 4-8pm at Best Western Lakeway Inn, featuring exhibitors and speakers. www.recreationnorthwest.org/events/recreation-northwest-expo/
The MBBC and NW Tandem Rally will be hosting a booth at this expo.

Seattle Bike Show: February 28 & March 1 (see p. 2) seattlebikeshow.com

CenturyLink Field Event Center, 800 Occidental Ave
10-5 Sat; 10-4 Sun

The MBBC and NW Tandem Rally will be hosting a booth at this expo. Contact Doug (chuckanutcentury@mtbakerbikeclub.org) or Jennifer (director2015@nwtr.org) to volunteer to staff the booth.

4 Mt Baker Bicycle Club - February 2015

**11 Week
Spring Cycling**
Cycle with power & confidence!
Starts week of 3/1/2015
**Indoor Cycle - Progressive to
make you stronger & faster**
Mondays only 6:30 - 7:30 pm
15% off for MBBC Members!


**Get the most out of your
training 2X per week**
Level 1 Mon & Wed 6:45 - 7:45 am
Level 2 Tue & Thu 6:45 - 8:15 pm
Register online!
800 McKenzie Ave.
Bellingham, WA 98225
360.733.5050
www.cyclemoles.com



Vancouver Bike Show: March 7-8 vancouverbikeshow.com
Vancouver Convention Center, Vancouver BC
10-6 Sat; 10-5 Sun The MBBC and NW Tandem Rally will be hosting a booth at this expo. Contact Doug (chuckanutcentury@mtbakerbikeclub.org) or Jennifer (director2015@nwtr.org) to volunteer to staff the booth.

Seattle Bike Swap: February 8, 9am - 2pm
Seattle Center Exhibition Hall, 225 Mercer St. Seattle, 98109
The Seattle Bike Swap is a bike bargain hunter's paradise. This huge bike garage sale will have great deals on new and used bike related goods of all types and sizes.
\$5 Admission cascade.org/bike-swap

Pedaler's Fair (Seattle): May 2, 2015 pedalersfair.com

Trail and Track Work Parties

- Whatcom Mountain Bike Coalition (WMBC) wmbcmtb.org/trail-days/
 - February 8- Larrabee - 10am
 - February 21 - Galbraith - **MBBC's TRAIL DAY!** - 9am
 - March 1- Larrabee - 10am
 - March 14 - Larrabee - 10am
- Bellingham Parks Dept. 360-778-7105 and cob.org/government/public/Volunteer/parks/schedule.aspx
 - February 7 - Rock Hill Park 10am
 - February 14 - Cornwall Park 10am
 - February 21 - Little Squalicum Park 10am
 - February 28 - Connelly Creek 10am
Hannah Creek 2pm
 - March 14 - Squalicum Creek Park 10am

BIKE RIDES: MARK YOUR CALENDAR - 2015 EDITION

2015 RIDES - NEARBY

February 2015

- 16** Presidents Day Ride (MBBC Ride Bellingham) see p. 1
22 Chilly Hilly (Bainbridge Island) cascade.org/chillyhilly

March 2015

- 3** Mussels in the Kettles (Whidbey Island) whidbeybicycleclub.org/
15 McClinchy Mile (Arlington) bikesclub.org/mcclinchy
28 Dandy Daffodil Tweed Ride (La Conner) thedandydaffodil.com

April 2015

- 18** Tulip Pedal (La Conner) tulipfestival.org/calendar/event/522
25 Tour de Lopez (Lopez Island) lopezisland.com/tourdelopez.htm

May 2015

- 2** Camano Climb (Camano Island) arlingtonvelosport.com
3 Seattle Bike n Brews (Seattle) cascade.org/seattle-bike-n-brews
9 Skagit Spring Classic (Burlington) skagitspringclassic.org
9 Living the Dream Ride (Snohomish) livingthedreamride.org
16 Haul Ash Tour de Brew (Woodinville) redhook.com/calendar
25 7 Hills of Kirkland (Kirkland) 7hillskirkland.com
30 Flying Wheels (Redmond) cascade.org/flying-wheels
31 Seattle Tour de Cure (Seattle) main.diabetes.org

June 2015

- 1** High Tide Ride (Anacortes) northislands.younglife.org
27 Red-Bell 100 (Redmond-Bellingham) cascade.org/redbell

July 2015

- 2-6** Northwest Tandem Rally (Bellingham) nwtr.org/2015
11-12 STP (Seattle to Portland) cascade.org/stp
15-19 RedSpoke (Redmond-Spokane) redspoke.org
18 Tour de Whatcom (Bellingham) tourdewhatcom.com
25-26 ALS Doubleday Ride (Snohomish)
30 RAMROD (Mt. Rainier) redmondcyclyclingclub.org

August 2015

- 1-2** Tour de Lavender (Sequim) tourdelavender.wordpress.com
2 Ride the Hurricane - portangeles.org/pages/RideTheHurricane
7-9 Obliteride (Seattle) obliteride.org
9 Bill's Hills of Bellingham (MBBC ride) mtbakerbikeclub.org
14-15 RSVP 1 (Seattle-B'ham) cascade.org/ride-major-rides/rsvp
15-16 RSVP 2 (Seattle-B'ham) cascade.org/ride-major-rides/rsvp
30 Woods Coffee (Bellingham) mtbakerbikeclub.org/woodsrides.html

September 2015

- 12-13** MS 150 (Mt Vernon) bikewas.nationalmssociety.org/
13 Mt Baker Hill Climb (Glacier) norka.us
19 Tour de Whidbey (Whidbey Island) facebook.com/tourdewhidbey
20 Chuckanut Century (Bellingham) chuckanutcentury.org
20 Cycle the Wave (Seattle) thewavefoundation.org/cycle-the-wave/
27 Kitsap Color Classic (Kingston) cascade.org/kitsap-color-classic

October 2015

- 31** Boneshaker Bike Festival (La Conner) boneshakerbikefest.com

November 2015

- 26** Thanksgiving Ride (MBBC Ride - Bellingham)

December 2015

- 16** Lighted Neighborhoods Ride (MBBC Ride - Bellingham)

As of February 1st, some annual rides don't have their 2015 information updated yet. Check back every month as new rides are added and dates are finalized.

2015 RIDES - FURTHER AWAY

March 2015

- 15** Gran Fondo (Ephrata) rideviciouscycle.com

April 2015

- 9** Daffodil Classic (Tacoma) twbc.org
23-26 Northwest Crank (Wenatchee) northwestcrank.com
26 Lilac Century (Spokane) northdivision.com

May 2015

- 2** Ride Around Clark County (Vancouver WA) vbc-usa.com/racc
3 May Day Classic (Federal Way) philsbikeshop.com/mayday
3 MEC Century Victoria (Victoria BC) events.mec.ca/node/39401
16 Reach the Beach (Oregon Coast) reachthebeach.org
17 Canyon for the Day (Yakima County) crimestoppersyakco.org/
31 Gran Fondo Leavenworth

June 2015

- 6** Apple Century (Wenatchee) applebikeride.com
13-20 Ride the Rockies (Denver CO) ridetherockies.com
20 Chelan Century Challenge (Lake Chelan) centuryride.com
20 Cycle de Vine (Lake Chelan) cycledevine.com
20 Chafe150 Gran Fondo (Sandpoint ID) <http://chafe150.org/>
21-27 Bike Tour of CO (Breckenridge CO) bicycletourcolorado.com
28 Two County Double (Olympia) capitalbicycleclub.org/2County/

July 2015

- 11-12** Triple Bypass (Evergreen/Avon CO) triplebypass.org
19 Valley Gran Fondo (Fort Langlely BC) valleygranfondo.com
25 Mt Evans H-Climb (Idaho Spgs CO) teamevergreen.org/mtevans/
26 Tour de Kitsap (Bremerton) westsoundcycling.com/

August 2015

- 1** 8 Lakes Leg Aches (Spokane) lcsnw.org/8lakesride/
1 Portland Century (Portland OR) portlandcentury.com
2-8 RAW (Ilwaco to WallaWalla) cascade.org/raw
15 Crater Lake Century (Klamath Falls OR) craterlakecentury.com/
23 Tour de Victoria (Victoria BC) tourdevictoria.com
29-30 RAPSody (Tacoma) wabikes.org/rapsody
31 High Pass Challenge (Packwood) cascade.org/hpc

September 2015

- 12** Tour de Blast (Mt St Helens) tourdeblast.com
13 Spokefest (Spokane) spokefest.org

October 2015

- 3** Manastash Metric Century (Ellensburg) drier-ride.org



MBBC ADMINISTRATION

Mount Baker Bicycle Club Board of Directors and Officers:

Hilary Higgins - President
Scott Dorough - Vice President
Jennifer Longstaff - Secretary/Membership
Brian Christensen - Treasurer
Eric Stromerson - Rides Coordinator
Bill McCourt, Tim Ryan -- at large

Committees:

Chuckanut Century: Doug Schoonover
Media; Bellingham Marathon Escorts: Greg Rehm
Media; New Year's Day Ride: Mark Wheatley
Media; NW Tandem Rally 2015: Jennifer Longstaff
Bus-to-Bike Shelters project: Rodd Pemble
Newsletter-Bagel Procurer: Cathie Gerlicher
Graphic Design: Tim Ryan
Certified MBBC Ride Leaders: a long list



Club Bike Jerseys

The official MBBC bike jersey is a colorful short-sleeved full-zip jersey, available in men's and women's sizes, race cut and club cut. We keep a small number of jerseys on hand, and if we have requests for more we'll put in a new order. Jerseys are \$60 (including tax) to MBBC members.

To inquire about availability of MBBC jerseys and to try on, pick up, or order a new one, contact bikebeh@gmail.com.

Contacts:

Information-- bikebeh@gmail.com
Chuckanut Century -- (360 410-6431)
chuckanutcentury@mtbakerbikeclub.org
Newsletter -- mbbcnewsletter@mtbakerbikeclub.org
NW Tandem Rally 2015 - info2015@nwtr.org

Contribute to the MBBC newsletter submission guidelines:

Articles, editorials, photographs, and artwork are welcome for inclusion in the newsletter. Anything related to bicycling will be considered; please discuss ideas with the editor (mbbcnewsletter@mtbakerbikeclub.org) in advance to reserve newsletter space or if you have questions. Final materials are due the last Friday before the last full week of every month, though earlier submissions are appreciated. Text can be submitted in any common format, for example: plain text, HTML, MS Word, etc. Please use JPG, PNG, or TIFF format for photos, and ensure they are at least 250 ppi. Articles may be edited for grammar, spelling, and space considerations.

Please notify the MBBC of upcoming cycling events for inclusion in the events list/calendar. Provide details plus contact information.

Classified ads are a MBBC member privilege and are printed as space is available.

MBBC Membership Form for 2015

☐ New Member ☐ Renewing Member ☐ This is a change of address

see member benefits and download membership form
at: mtbakerbikeclub.org/membership

Last name: _____ First name: _____

Address: _____

City: _____ State: _____ Postal Code: _____

E-mail: _____

Contact telephone number: _____

Associate member: _____

(An associate member is any person living at the same address as the individual member)

I would like to receive my newsletter via (choose one): ☐ on-line or ☐ printed & mailed

Would you like to help? Volunteers are our most valuable resource.

Please check any of the boxes that appeal to you and we will be in touch:

- ☐ Board Member ☐ Ride Leader ☐ Newsletter
☐ Chuckanut Century ☐ Bike to Work and School Day
☐ Special Events ☐ Tandem Rally 2015 ☐ Education
☐ I can provide discounts on _____

Membership type:

Individual: \$15 _____
Family/Associate: \$25 _____
Additional Donation: _____
(donations support community bicycling programs)
Total enclosed: \$ _____

Please enclose a check payable to:
Mt. Baker Bicycle Club

Mail to: Mt. Baker Bicycle Club
attention: membership
Post Office Box 2702
Bellingham, Washington 98227

MORE VOLUNTEERING OPPORTUNITIES – SO MANY PROJECTS!

If you missed the annual member's meeting on January 25, you missed some great food and drink and bike swap table and speeches about the club's plans for 2015. You also missed the opportunity to sign up to help on some of the projects in the works for 2015. Here's a recap of volunteer opportunities, as well as a contact if you'd like to help out with any of these:

Bike to Work and School Day - MBBC Celebration Station

In 2015, the Bike to Work/School morning celebration stations will be run by their volunteers, including set up, take down, signs, cowbells, and treats. Volunteers at each station will be responsible for contacting sponsors to donate treats and prizes. The MBBC will have at least one station. If you'd like to help staff it or lead/plan it, drop an email to: bikebeh@gmail.com, and we'll be in touch when we decide how many stations we want to take on.

An explanation of the 2015 Bike-Day organization setup can be read on Mary Anderson's everybodyBike-sponsored web page:

<http://www.biketoworkandschoolday.org/>



Welcome new members

Meri-Jo Borzilleri

Cathy Brooking

Karen Crogan

Russell Dunn

Marco Hubert

Adam Kodin

Carol Landt

Gordon Litster

Eleanor Okan

Liza Okan

Sophia Okan

Peter Sallee

Jackie Schoonover

Bob Stewart

Shirley Zuanich

We're glad to have you in the MBBC!

Out-of-County New Rides Committee

Interested in going on some new MBBC group rides further away from Bellingham/Whatcom? Join the new planning committee to make it happen. bikebeh@gmail.com

Bus-to-Bike Shelters in Whatcom Schools

Work with Sustainable Connections on current and future school bike shelters planning. roddpemble@hotmail.com

NW Tandem Rally pre-event prep

Preparations the 2 weeks before the event. June 15- July 1. Road marking, goodie-bags stuffing, registrations sorting, etc. info2015@nwtr.org

NW Tandem Rally during-event indoors

July 2-5, work registration table, vendor fair assistance and setup, bike storage rooms, banquet/breakfast assist. info2015@nwtr.org

NW Tandem Rally during-event outdoors

July 4-5, ride support. on-road SAG, resupply rest stops, general rider assistance, emergency reporting and communications from the road, mass-start crowd-control. info2015@nwtr.org

MBBC Board Member or Project Leader

Join our energetic board, help with existing projects, lead new ones. Meetings 4X/year, as much or as little additional commitment as fits your life. bikebeh@gmail.com

Northwest Tandem Rally
Bellingham **July 2-6**
nwtr.org/2015 **2015**



<i>Sunday</i>	<i>Monday</i>	<i>Tuesday</i>	<i>Wednesday</i>	<i>Thursday</i>	<i>Friday</i>	<i>Saturday</i>
February 1 Rabbit Ride Edison Social Ride	2	3 Ferndale Social ride	4 Wed Group Ride	5 Edison Social Ride TNR	6	7 Donut Ride BHam Parks Trail Day
8 Rabbit Ride Edison Social Ride Seattle Bike Swap WMBC Trail Day	9	10 Ferndale Social ride	11 Wed Group Ride	12 Edison Social Ride TNR Love Your Ride	13	14 <i>Valentine</i> Donut Ride Recumbent Ride BHam Parks Trail Day
15 Rabbit Ride Edison Social Ride	16 Presidents Day Ride <i>Presidents Day</i>	17 Ferndale Social ride	18 Wed Group Ride	19 Edison Social Ride TNR MBBC March Newsletter Deadline	20	21 Donut Ride MBBC's WMBC Trail Day on Galbraith BHam Parks Trail Day
22 Rabbit Ride Edison Social Ride Chilly Hilly	23	24 Ferndale social ride	25 Wed Group Ride	26 Edison Social Ride TNR	27	28 Donut Ride BHam Parks Trail Day Seattle Bike Show D-1



Mount Baker Bicycle Club

Post Office Box 2702
Bellingham, Washington 98227

Welcome to Bellingham
Now Get on Your Bike!
www.mtbakerbikeclub.org

If you are a club member and wish to receive a printed version of the newsletter rather than online, please inform mbbcnewsletter@mtbakerbikeclub.org. Club members are entitled to a printed/mailed version sent to a US address..